

BELLE MAISON®

MAY 2025 COLLECTION

Blaine

Blaine is our intricate paisley this season. The artist used a mixed media technique with ink and watercolor to create a block printed look. It comes in 4 classic colorways.



EBONY



SPA



INDIGO



LINEN

- 100% Cotton
- 54" Width
- 18" Vertical Repeat
- 9" Horizontal Repeat

- Half Drop
- 30,000 Double Rubs
- Printed up the roll
- Made in Spain

Rosette

Rosette is a Jacobean print with a quirky design. The artist added hand drawn details on top of ethereal painted flower heads and leaves. It is available in 4 soft colorways.



CLOUD



DENIM



CREAM



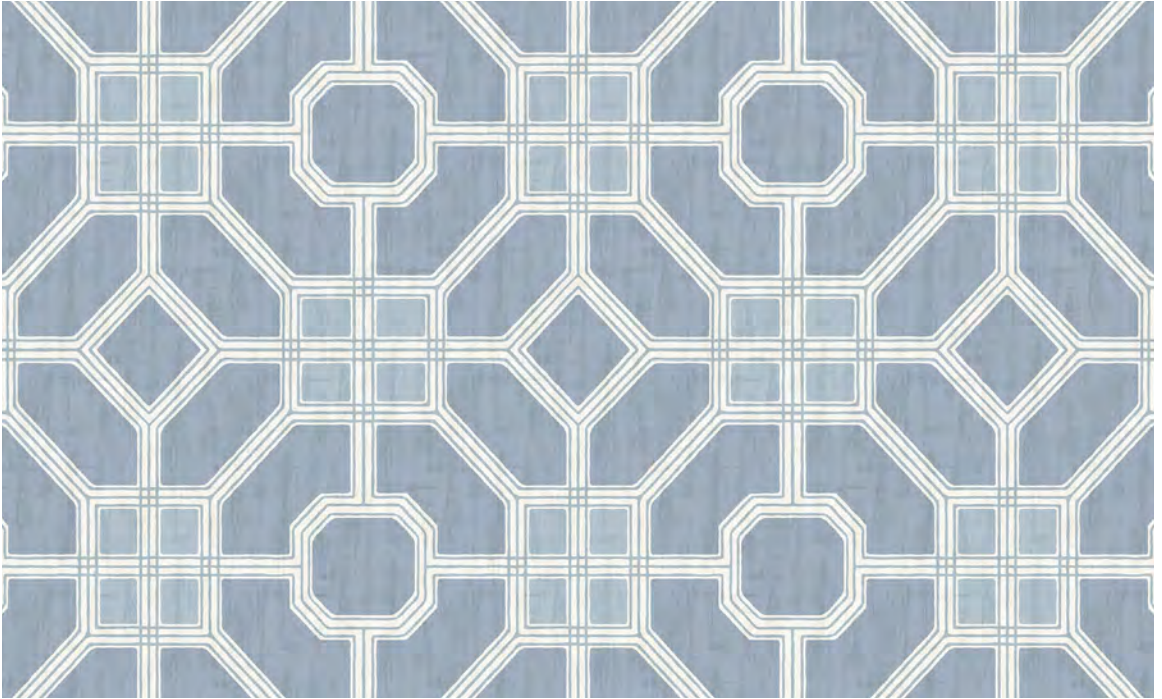
QUARTZ

- 100% Cotton
- 54" Width
- 27" Vertical Repeat
- 13.5" Horizontal Repeat

- Half Drop
- 30,000 Double Rubs
- Printed up the roll
- Made in Spain

Lennon

Lennon is a hand painted classic trellis pattern with added texture for a distressed look. It is printed in 4 versatile colorways on our 100% cotton.



RAIN



BLUE HAZE



FOG



SANDSTONE



DELFT

- 100% Cotton
- 54" Width
- 13.5" Vertical Repeat
- 13.5" Horizontal Repeat

- Straight
- 30,000 Double Rubs
- Printed up the roll
- Made in Spain

Alice

Alice is our most whimsical design this season. Its playful flower buds, vines, and leaves are hand painted and drawn with watercolor. It comes in 4 soft colors on our 100% cotton.



PETAL



MIST



PEONY



CORNFLOWER

- 100% Cotton
- 54" Width
- 13.5" Vertical Repeat
- 13.5" Horizontal Repeat

- Half Drop
- 30,000 Double Rubs
- Printed up the roll
- Made in Spain

Ursa

Ursa features scrolling branches and fan shaped leaves that create a calming forest scene on the fabric. It was illustrated with gouache to give it a painterly effect. It comes in 3 harmonious colorways.



LEAF



LINEN



SPA

- 100% Cotton
- 54" Width
- 18" Vertical Repeat
- 18" Horizontal Repeat

- Straight
- 50,000 Double Rubs
- Printed up the roll
- Made in Spain

Tahiti

Tahiti is a unique tropical print. It features a hand illustrated island villa with a house surrounded by lush multicolored leaves, palm trees, and flowers. It is available in 4 vivid colors.



CONFETTI



LAGOON



JUNGLE



MOSS

- 100% Cotton
- 54" Width
- 13.5" Vertical Repeat
- 13.5" Horizontal Repeat

- Half Drop
- 30,000 Double Rubs
- Printed up the roll
- Made in Spain

Kimiko

Kimiko is a hand painted novelty pattern inspired by chinoiserie. Its flowing watercolor elements feature a crane next to pagodas, water, cherry blossom trees, and willows. It is available in 5 colors.



DELFT



SAGE



CHERRY



STRAW



FOG

- 100% Cotton
- 54" Width
- 27" Vertical Repeat
- 13.5" Horizontal Repeat

- Half Drop
- 30,000 Double Rubs
- Printed up the roll
- Made in Spain

Jessa

Jessa is a vining Jacobean inspired by a vintage fabric. Its flower heads and leaves also give it a floral look. It comes in a variety of 4 striking and soothing color options.



ONYX



ECRU



CADET



CORAL

- 100% Cotton
- 54" Width
- 27" Vertical Repeat
- 13.5" Horizontal Repeat

- Half Drop
- 30,000 Double Rubs
- Printed up the roll
- Made in Spain

Zola

Zola is a watercolor ikat with a southwest flair. Its hand painted motifs are made with a gentle wash of earthy and soothing colors. It is printed on our linen/viscose ground in 6 colors.



DESERT



SURF



MIST



SUEDE



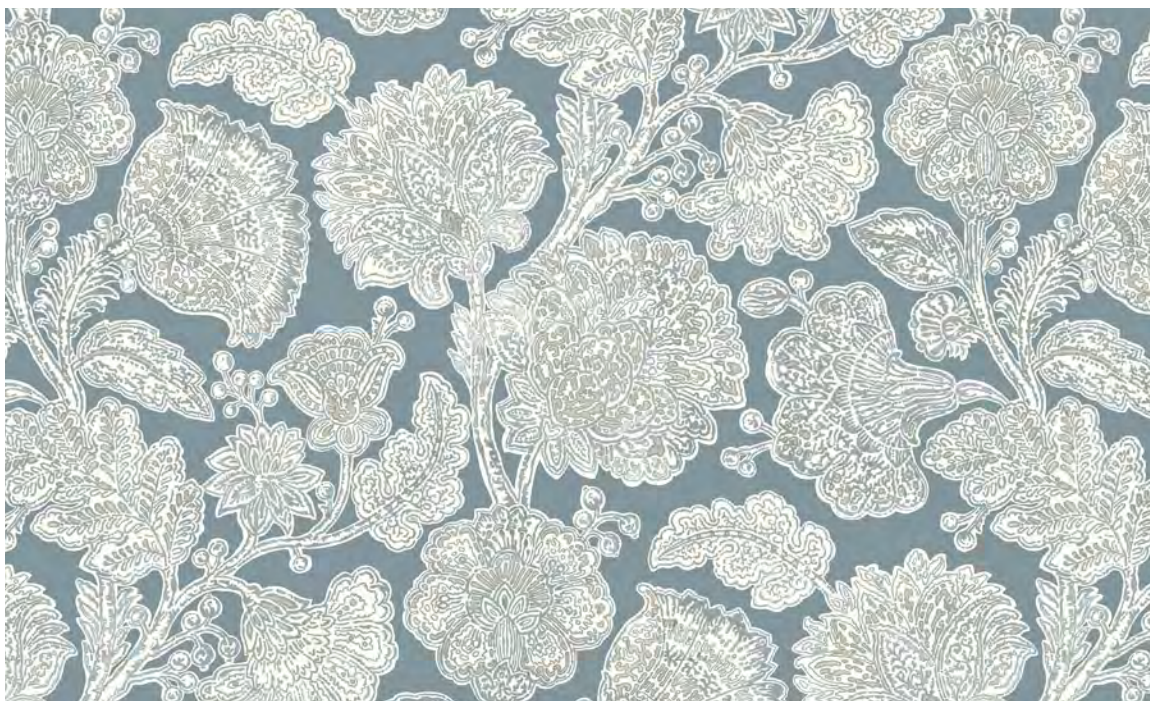
LINEN

- 67% Viscose / 33% Linen
- 54" Width
- 13.5" Vertical Repeat
- 13.5" Horizontal Repeat

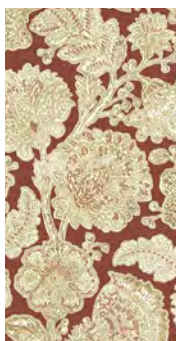
- Straight
- 15,000 Double Rubs
- Printed up the roll
- Made in Spain

Davinia

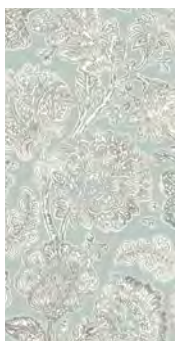
Davinia is a handcrafted Jacobean with a block printed look. The artist used a special technique to create texture and detail in the flower heads and leaves. We loved it so much that we came out with 7 tonal colorways.



SEASIDE



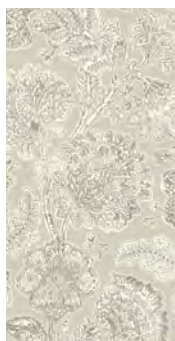
RUST



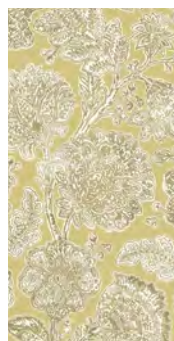
SPA



INK



LINEN



HONEY



SAGE

- 100% Cotton
- 54" Width
- 27" Vertical Repeat
- 13.5" Horizontal Repeat

- Half Drop
- 30,000 Double Rubs
- Printed up the roll
- Made in Spain

Carmella

Designed with a bold style, Carmella offers a new twist to a traditional Jacobean. Its vining leaves and flowers are hand painted with watercolor. It is printed in 5 colorways.



CLARET



GOLDEN



SEASIDE



ONYX



ETHEREAL

- 100% Cotton
- 54" Width
- 27" Vertical Repeat
- 13.5" Horizontal Repeat

- Half Drop
- 30,000 Double Rubs
- Printed up the roll
- Made in Spain