

BELLE MAISON®

NOVEMBER 2024 COLLECTION

Adira

Adira is a dramatic, hand drawn Jacobean pattern. Its stems and vines create an elegant ogee shape with intricate blossoms, flowers, and leaves. It comes in 6 colorways to satisfy traditional customers and those who are looking for something different.



GARNET



ECRÚ



SPA



INDIGO



CORAL



ONYX

- 100% Cotton
- 54" Width
- 27" Vertical Repeat
- 13.5" Horizontal Repeat

- Half Drop
- 30,000 Double Rubs
- Printed up the roll
- Made in Spain

Reece

Reece is a watercolor damask pattern that features illustrated linework, botanical elements, and a quirky hand painted detail that give a traditional medallion motif an updated style. It comes in 3 colors.



FROST



SIENNA



LEAF

- 100% Cotton
- 54" Width
- 13.5" Vertical Repeat
- 13.5" Horizontal Repeat

- Straight
- 30,000 Double Rubs
- Printed up the roll
- Made in Spain

Wellfleet

Painted with watercolor by hand, Wellfleet is this season's lively coastal design starring a sea turtle as the center of an undersea scene with fish, shells, starfish, jellyfish, and seaweed. It comes in 3 nautical colors.



SEASIDE



DELFT



SPA

- 100% Cotton
- 54" Width
- 13.5" Vertical Repeat
- 27" Horizontal Repeat

- Half Drop
- 30,000 Double Rubs
- Printed up the roll
- Made in Spain

Rosabella

Rosabella is a lush tropical floral with a botanical scene that features jungle leaves, lilies, hibiscus, and a variety of blooms and fruits. Hand painted with gouache, it comes in 4 fresh colorways.



SEAMIST



FOREST



SPA



SPRING

- 100% Cotton
- 54" Width
- 27" Vertical Repeat
- 27" Horizontal Repeat

- Straight
- 30,000 Double Rubs
- Printed up the roll
- Made in Spain

Juliana

Juliana is a traditional block printed paisley design and is inspired by a vintage fabric document. It comes in 5 stylish color options on our 100% cotton.



DELFT



SAGE



PAPRIKA



SEAMIST



DREAMY

- 100% Cotton
- 54" Width
- 9" Vertical Repeat
- 6.75" Horizontal Repeat

- Straight
- 30,000 Double Rubs
- Printed up the roll
- Made in Spain

Campbell

Campbell is a whimsical Jacobean that features berries, birds, a lion, tiger, and deer. The special geometric details and texture in the motifs give it an antiqued look on our linen blend ground. It is available in 3 classic colors.



GOLDEN



COLONIAL



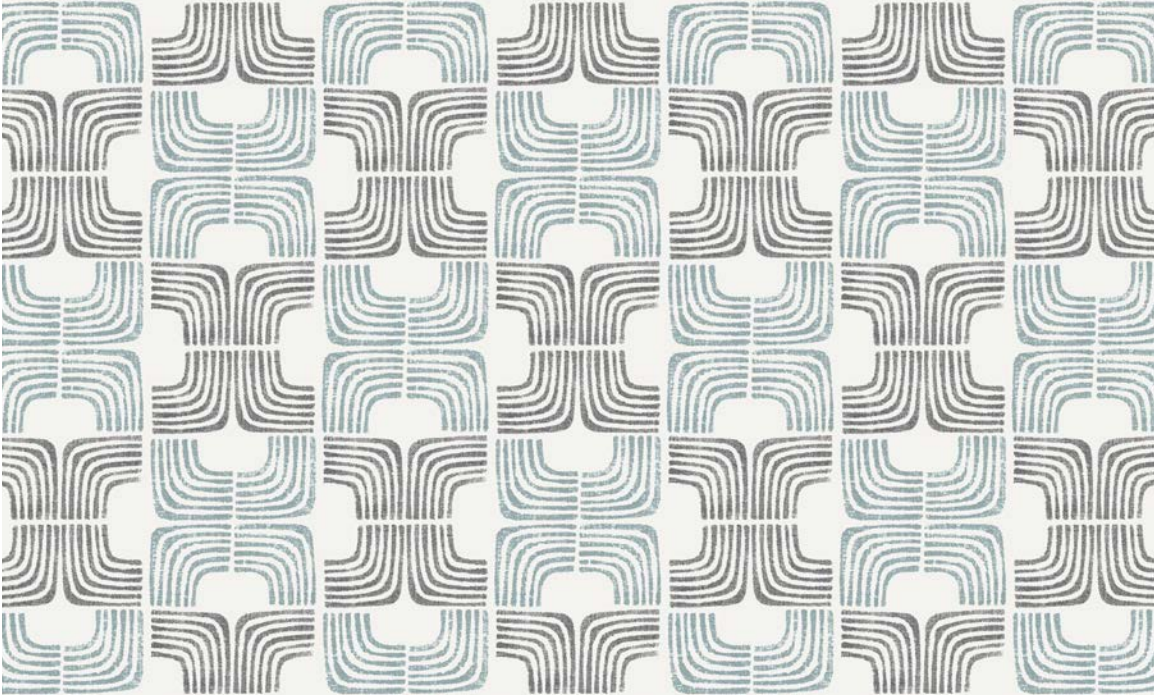
STONEWASH

- 55% Linen / 45% Cotton
- 54" Width
- 27" Vertical Repeat
- 27" Horizontal Repeat

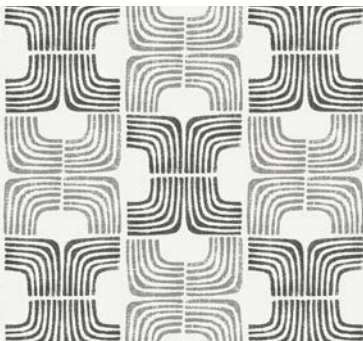
- Straight
- 50,000 Double Rubs
- Printed up the roll
- Made in Spain

Arlo

Handmade with a block print technique, Arlo's stacked square and arch shapes create a geometric design with a contemporary look. Printed on 100% cotton, it comes in 4 modern color options.



MINT



PEWTER



NATURAL



DENIM

- 100% Cotton
- 54" Width
- 6.75" Vertical Repeat
- 3.375" Horizontal Repeat
- Half Drop
- 30,000 Double Rubs
- Printed up the roll
- Made in Spain

Bora Bora

Bora Bora is for the tropical lover who's looking for something unique. It features a quirky beach scene with two ladies under palm trees, hibiscus, flower details, and geometric shapes. It comes in 3 colors on our natural linen blend ground.



SURFSIDE



TROPICAL



SAND DUNE

- 55% Linen / 45% Cotton
- 54" Width
- 13.5" Vertical Repeat
- 13.5" Horizontal Repeat

- Straight
- 50,000 Double Rubs
- Printed up the roll
- Made in Spain

Hawkins

Designed from vintage fabric, Hawkins is a chic ikat design with a fine texture that gives it an aged and woven look. It comes in 4 soothing color options on our linen viscose blend ground.



JADE



DUNE



DELFT



CAMEL

- 67% Viscose / 33% Linen
- 54" Width
- 18" Vertical Repeat
- 9" Horizontal Repeat
- Straight
- 15,000 Double Rubs
- Printed up the roll
- Made in Spain

Winifred

Winifred is a vining floral with birds, buds, and leaves. It is painted in a whimsical, watercolor style. It comes in 3 mellow colorways on our 100% cotton ground.



ICE



OPAL



SORBET

- 100% Cotton
- 54" Width
- 13.5" Vertical Repeat
- 13.5" Horizontal Repeat

- Half Drop
- 30,000 Double Rubs
- Printed up the roll
- Made in Spain

Glenda

Glenda is a hand illustrated floral pattern drawn with a block printed look. Inspired by a toile, it features harmonious vines, richly detailed flower heads, stems, and buds. It comes in 5 monochromatic colorways.



EBONY



CORAL



INDIGO



SAGE



SAND

- 100% Cotton
- 54" Width
- 27" Vertical Repeat
- 13.5" Horizontal Repeat

- Half Drop
- 30,000 Double Rubs
- Printed up the roll
- Made in Spain