

BELLE MAISON®

INTERWOVEN™ | MAY 2024

www.bellemaisonusa.com

Dominique

Inspired by vintage fabric, Dominique is a classic Jacobean that makes a sophisticated statement. Its richly detailed flower heads are printed on a mix of our natural and bleached linen blend ground in 5 colors.



COLONIAL



MIST



ROSEWOOD



MIDNIGHT



ONYX

- 55% Linen / 45% Cotton
- 54" Width
- 27" Vertical Repeat
- 13.5" Horizontal Repeat

- Half Drop
- 50,000 Double Rubs
- Printed up the roll
- Made in Spain

Suniva

Suniva is a unique hand illustrated medallion pattern with an artistic flair. While its medallions are a traditional motif, the linework gives them a contemporary style. It is printed in 4 fresh colors on our 100% cotton ground.



SPA



TAUPE



LEAF



DELFT

- 100% Cotton
- 54" Width
- 27" Vertical Repeat
- 13.5" Horizontal Repeat
- Straight
- 30,000 Double Rubs
- Printed up the roll
- Made in Spain

Lisette

Lisette is a feminine hand painted chinoiserie with elegant flowing rose branches, flowers, birds, and butterflies. Reminiscent of a French wallpaper panel, our 4 colorways give the classic chinoiserie motif a chic, updated style.



PETAL



SPRING



CORNFLOWER



MISTY

- 100% Cotton
- 54" Width
- 27" Vertical Repeat
- 27" Horizontal Repeat

- Straight
- 30,000 Double Rubs
- Printed up the roll
- Made in Spain

Zen Garden

Zen Garden is designed from hand painted artwork on refined rice paper. Painted in a blockprint style, it depicts a pagoda scene with cranes, deer, trees, and bridges in 4 fun colors.



MUSTARD



MIST



JADE



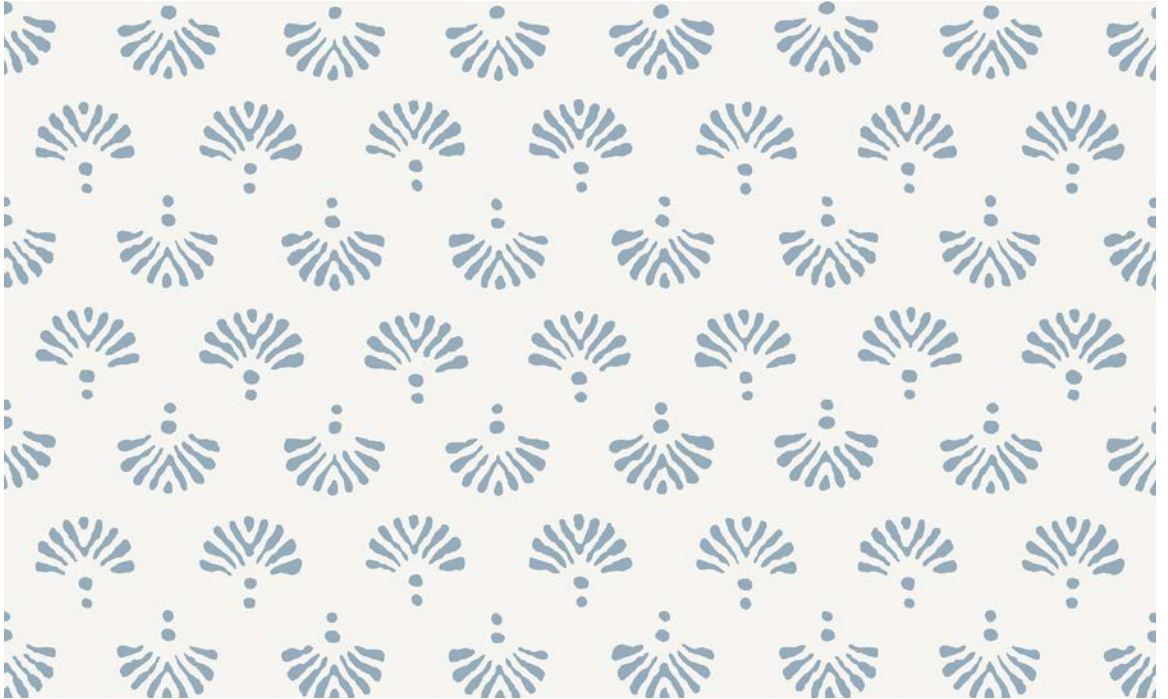
CHERRY

- 100% Cotton
- 54" Width
- 27" Vertical Repeat
- 13.5" Horizontal Repeat

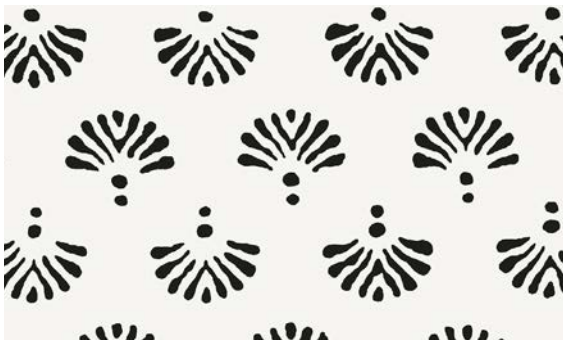
- Half Drop
- 30,000 Double Rubs
- Printed up the roll
- Made in Spain

Nell

Sourced and conceived from a hand dyed batik textile, Nell's repeating fan pattern makes a laid-back contemporary design. It is available in 3 salable colors.



POWDER



DOMINO



NATURAL

- 100% Cotton
- 54" Width
- 6.75" Vertical Repeat
- 13.5" Horizontal Repeat

- Straight
- 50,000 Double Rubs
- Printed up the roll
- Made in Spain

Eliza

Eliza is a dramatic whimsical floral with lively flowers, ornate leaves, and blossoms. Created from a vintage textile, its 4 color stories are printed in retro and modern looks that pop.



CORAL



GOLDEN



SPRING



ROSE

- 100% Cotton
- 54" Width
- 27" Vertical Repeat
- 13.5" Horizontal Repeat

- Half Drop
- 30,000 Double Rubs
- Printed up the roll
- Made in Spain

Tavi

Tavi is a textural fun and funky medallion pattern with a lighthearted style. Inspired by a vintage textile, it comes in 3 colorways on our linen/viscose ground.



SPA



AMBER



INK

- 67% Viscose / 33% Linen
- 54" Width
- 13.5" Vertical Repeat
- 27" Horizontal Repeat

- Half Drop
- 15,000 Double Rubs
- Printed up the roll
- Made in Spain

Bartlett

Bartlett is a floral Jacobean created from an antique textile sourced by our fabric design team. It is featured on 4 classic colorways on our 100% cotton ground.



SEAMIST



ECRU



DENIM



HARVEST

- 100% Cotton
- 54" Width
- 13.5" Vertical Repeat
- 13.5" Horizontal Repeat

- Half Drop
- 30,000 Double Rubs
- Printed up the roll
- Made in Spain

Molly

Hand painted with watercolor, Molly captures romantic floral vines with gentle buds, delicate blossoms, and leaves. It is available in 3 colorways on 100% cotton.



AUTUMN



DELFT



SPRING

- 100% Cotton
- 54" Width
- 27" Vertical Repeat
- 13.5" Horizontal Repeat

- Half Drop
- 30,000 Double Rubs
- Printed up the roll
- Made in Spain

Celeste

Celeste is a floral designed from an antique French chine fabric woven with an ikat technique. The dyed threads that weave the flowers and leaves in the document create a textural look on our printed version. It comes in 3 elegant colorways.



CORAL



MIST



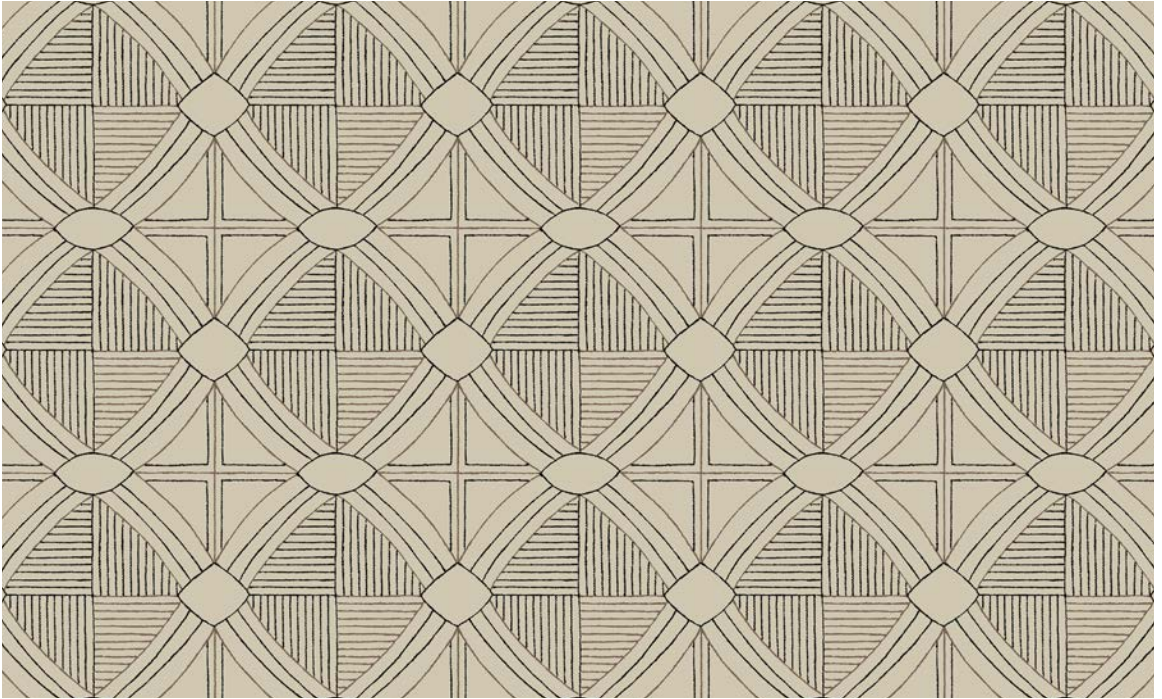
PROVENCE

- 100% Cotton
- 54" Width
- 13.5" Vertical Repeat
- 13.5" Horizontal Repeat

- Half Drop
- 30,000 Double Rubs
- Printed up the roll
- Made in Spain

Octavius

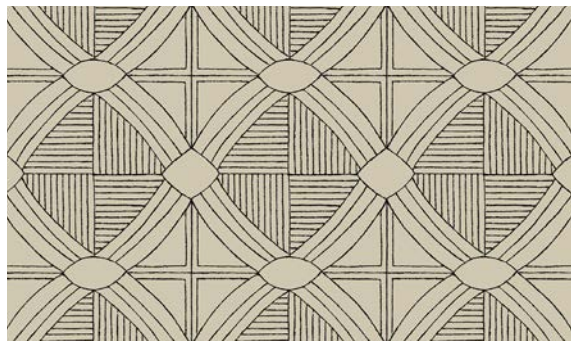
Octavius is a hand drawn trellis design with a modern geometric twist. It's the perfect transitional design and is printed on our natural linen cotton ground in 3 neutral colors.



WALNUT



LINEN



EBONY

- 55% Linen / 45% Cotton
- 54" Width
- 3.375" Vertical Repeat
- 3.375" Horizontal Repeat

- Straight
- 50,000 Double Rubs
- Printed up the roll
- Made in Spain

Azula

Inspired by safaris and jungles, Azula's hand painted zebra, tiger, and toucan are surrounded by lush watercolor greenery. It comes in 3 color stories from the natural world.



SAFARI



TROPICS



EBONY

- 100% Cotton
- 54" Width
- 13.5" Vertical Repeat
- 13.5" Horizontal Repeat

- Half Drop
- 30,000 Double Rubs
- Printed up the roll
- Made in Spain