

BELLE MAISON®

INTERWOVEN™ | NOV 2023

www.bellemaisonusa.com

Beauman

Beauman is a dramatic and imaginative Jacobean that's this season's showstopper. Designed from an antique textile, it features ornate flower heads, vines, and leaves. It is printed on our 100% cotton ground in 6 sophisticated colorways.



ONYX



ROSEMIST



GOLDEN



DELFT



PARISIAN



FOG

- 100% Cotton
- 54" Width
- 27" Vertical Repeat
- 27" Horizontal Repeat

- Straight
- 30,000 Double Rubs
- Printed up the roll
- Made in Spain

Mimi

Mimi's fun flower motif is reminiscent of vintage calico fabric. It features petite blooms and stems with a geometric flair in 3 fashionable colors.



GOLDEN



LEAF



AQUA

- 100% Cotton
- 54" Width
- 9" Vertical Repeat
- 6.75" Horizontal Repeat

- Straight
- 30,000 Double Rubs
- Printed up the roll
- Made in Spain

Imara

Imara is a fresh hand painted floral. The artist created elegant vining apple blossoms and leaves with a lively look in 4 soft and saturated colors.



CORAL



DELFT



HAZE



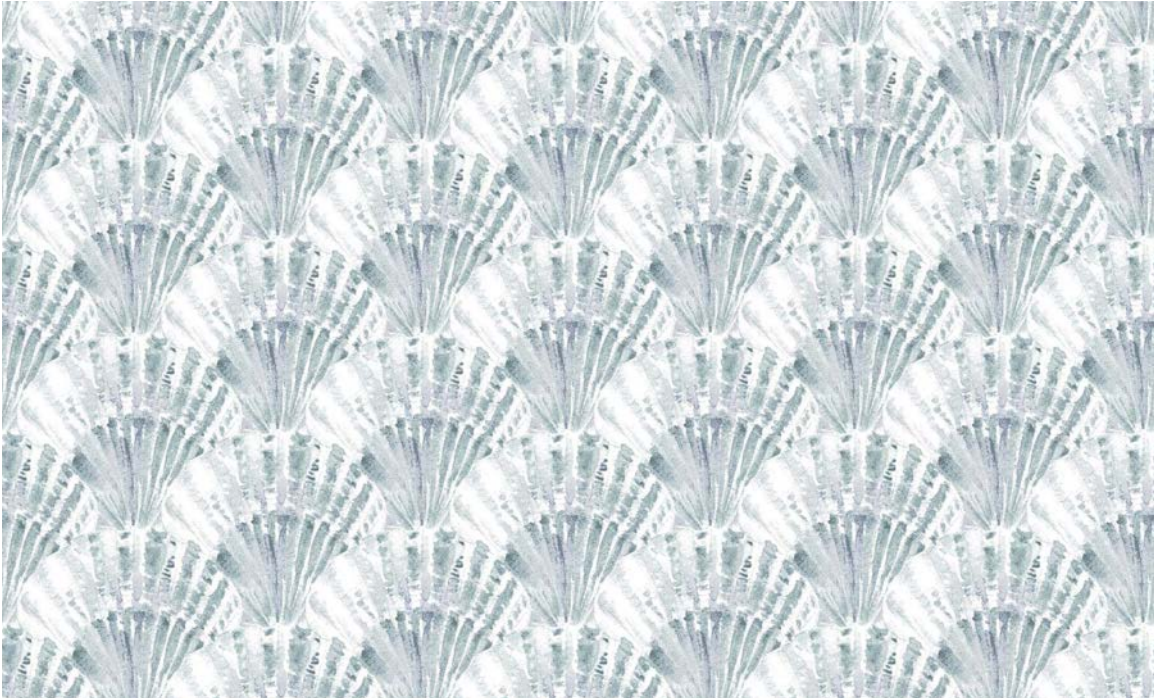
MIST

- 100% Cotton
- 54" Width
- 27" Vertical Repeat
- 13.5" Horizontal Repeat

- Half Drop
- 30,000 Double Rubs
- Printed up the roll
- Made in Spain

Barbados

Painted with watercolor washes, Barbados is a hand painted nautical print. The shell motif is a conversational that plays on a traditional scallop design. Beach colors and textures inspired our 4 colors on 100% cotton.



SEAMIST



DENIM



TERRA



CREAM

- 100% Cotton
- 54" Width
- 1.685" Vertical Repeat
- 2.25" Horizontal Repeat
- Half Drop
- 30,000 Double Rubs
- Printed up the roll
- Made in Spain

Laurel

Laurel is a graceful Jacobean crafted from a reworked vintage textile. It is printed on our natural linen cloth and is available in 4 traditional and soft colors.



MIST



HARVEST



DENIM



BLUSH

Our new linen-blend ground cloth is not bleached before printing. As a result, the color of the ground and ink may vary slightly between productions.

- 55% Linen / 45% Cotton
- 54" Width
- 27" Vertical Repeat
- 13.5" Horizontal Repeat
- Half Drop
- 50,000 Double Rubs
- Printed up the roll
- Made in Spain

Olympia

The hand drawn linework in Olympia renders an abstract textural effect that looks like ocean waves, mountains, or the underside of a mushroom. It is available in 4 harmonious colors on cotton.



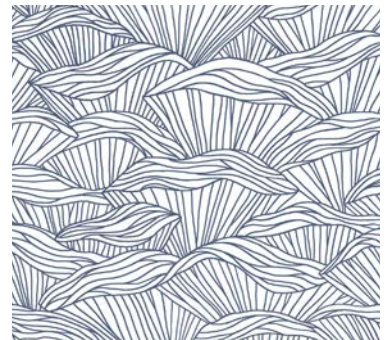
SEAFOAM



NATURAL



MARINE



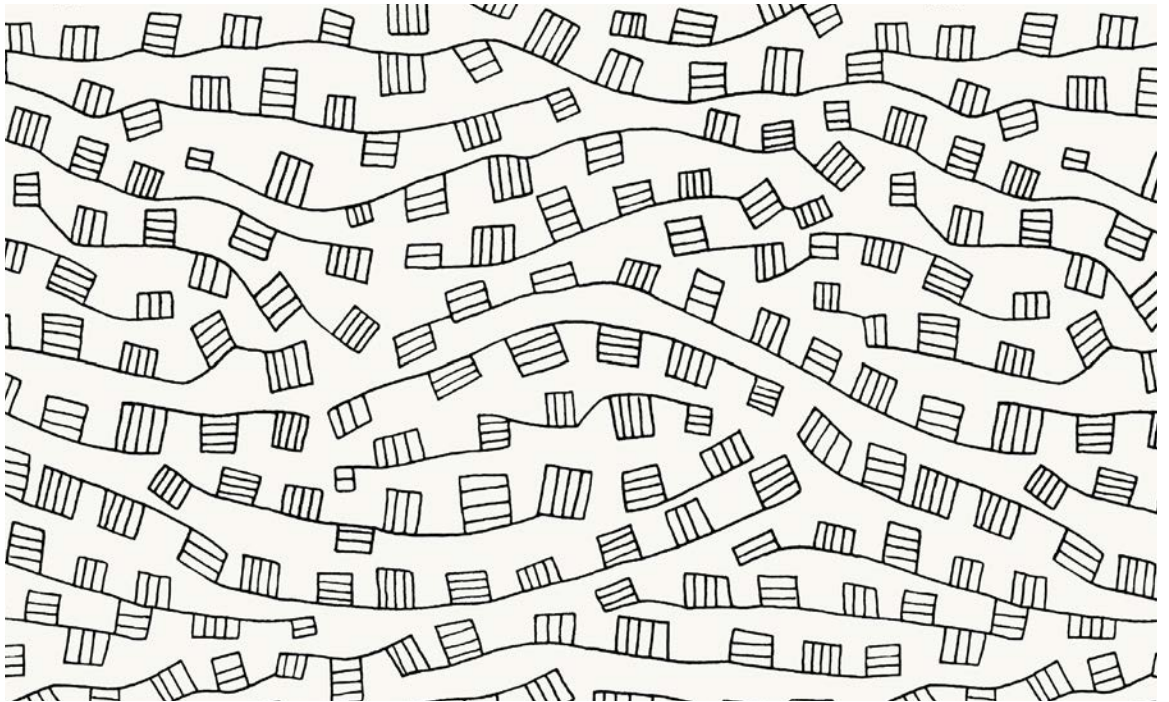
INK

- 100% Cotton
- 54" Width
- 9" Vertical Repeat
- 9" Horizontal Repeat

- Straight
- 50,000 Double Rubs
- Printed up the roll
- Made in Spain

Felix

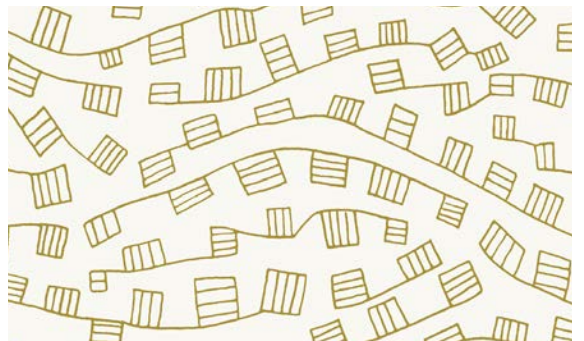
Inspired by an African mudcloth textile, Felix is hand drawn with linework that builds a clean and minimal geometric pattern. It comes in 3 contemporary colorways.



EBONY



INK



MUSTARD

- 100% Cotton
- 54" Width
- 14.763" Vertical Repeat
- 13.5" Horizontal Repeat

- Straight
- 50,000 Double Rubs
- Printed up the roll
- Made in Spain

Stevie

Stevie is a hand painted bright and youthful vining floral. Its happy blooms, butterflies, and leaves pop in 4 striking colorways.



CLASSIC



PRISM



ETHEREAL



CARNIVAL

- 100% Cotton
- 54" Width
- 27" Vertical Repeat
- 13.5" Horizontal Repeat

- Half Drop
- 50,000 Double Rubs
- Printed up the roll
- Made in Spain

Gareth

A time-honored damask pattern is the focus in Gareth. The fabric takes elements of rug and paisley motifs to create a maximal concept in 5 textured colorways.



RUSSET



ECRU



SMOKE



INDIGO



SPA



AMERICANA

- 100% Cotton
- 54" Width
- 27" Vertical Repeat
- 6.75" Horizontal Repeat
- Half Drop
- 30,000 Double Rubs
- Printed up the roll
- Made in Spain

Raf

Raf's artwork illustrates an ethereal forest scene. Painted with an airy watercolor wash, its 4 colorways reflect our favorite hues from each season.



ETHEREAL



LEAF



GOLDEN



SEAMIST

- 100% Cotton
- 54" Width
- 13.5" Vertical Repeat
- 13.5" Horizontal Repeat

- Half Drop
- 30,000 Double Rubs
- Printed up the roll
- Made in Spain

Oberlin

Produced on our linen/viscose ground, Oberlin's medallions and painted texture create a distressed, rug influenced look. It comes in 4 soothing and classic colorways.



CLOUD



CADET



HAZE



CHOCOLATE

- 67% Viscose / 33% Linen
- 54" Width
- 13.5" Vertical Repeat
- 13.5" Horizontal Repeat

- Straight
- 15,000 Double Rubs
- Printed up the roll
- Made in Spain