

BELLE MAISON®

INTERWOVEN™ | MAY 2023

www.bellemaisonusa.com

Corbin

Corbin features tigers roaming through palms and vegetation in a textured jungle scene. This fabric is printed on our new linen ground. The natural linen in the fibers gives it a feeling of a woven tapestry. It is offered in 4 rich color schemes.



CHOCOLATE



***ECRU**



SEASPRAY



FROST

*Our new linen-blend ground cloth is not bleached before printing on Corbin Ecu. As a result, the color of the ground and ink may vary slightly between productions.

- 55% Linen / 45% Cotton
- 54" Width
- 13.5" Vertical Repeat
- 13.5" Horizontal Repeat
- Half Drop
- 50,000 Double Rubs
- Printed up the roll
- Made in Spain

Bodie

Bodie was created by using traditional block printing methods. Its textural leaves fall gracefully across the fabric and build a soothing movement. It comes in 4 natural color combinations.



SAGE



DENIM



SAND



DUSK

- 100% Cotton
- 54" Width
- 6.75" Vertical Repeat
- 3.375" Horizontal Repeat

- Half Drop
- 50,000 Double Rubs
- Printed up the roll
- Made in Spain

Kiley

Kiley is a handmade botanical style floral. It is drawn in a popular and romantic Toile de Jouy technique and comes in 4 monochromatic and traditional colors.



INK



GRAPHITE



SAGE



LINEN

- 100% Cotton
- 54" Width
- 27" Vertical Repeat
- 13.5" Horizontal Repeat

- Half Drop
- 30,000 Double Rubs
- Printed up the roll
- Made in Spain

Elin

Rendered from an antique fabric document, Elin is a mix between a classic Jacobean and block print artwork. This mid-scale floral is offered in 5 modern colorways and is perfect for bedding, furniture, and home décor.



DIJON



COBALT



CLASSIC



PETAL



SPRING

- 100% Cotton
- 54" Width
- 13.5" Vertical Repeat
- 13.5" Horizontal Repeat

- Half Drop
- 30,000 Double Rubs
- Printed up the roll
- Made in Spain

Gabrielle

Stemming from the design influence of William Morris, Gabrielle is a cottage floral and a modern take on an antique style. The floral elements form an ogee and are mirrored in a textured repeat. It comes in 3 soft color palettes.



SUNSHINE



BLOSSOM



SAFFRON

- 100% Cotton
- 54" Width
- 13.5" Vertical Repeat
- 13.5" Horizontal Repeat

- Half Drop
- 30,000 Double Rubs
- Printed up the roll
- Made in Spain

Jasper

Jasper is a classic trellis and ogee design. Painted to mimic stitching or a woven, the detail leaves you asking if it is embroidery or a print. It is available in 4 fresh colorways



CLASSIC



SEAMIST



AMERICANA



DELFT

- 100% Cotton
- 54" Width
- 9" Vertical Repeat
- 13.5" Horizontal Repeat

- Straight Repeat
- 30,000 Double Rubs
- Printed up the roll
- Made in Spain

Adelina

Adelina is a grand scale Jacobean printed on our new natural linen/cotton ground cloth. It has a luxurious hand and drapeability. The texture made from the natural linen fiber gives the fabric an antique look. It comes in 4 stately color combinations.



SAGE



PORCELAIN



DENIM



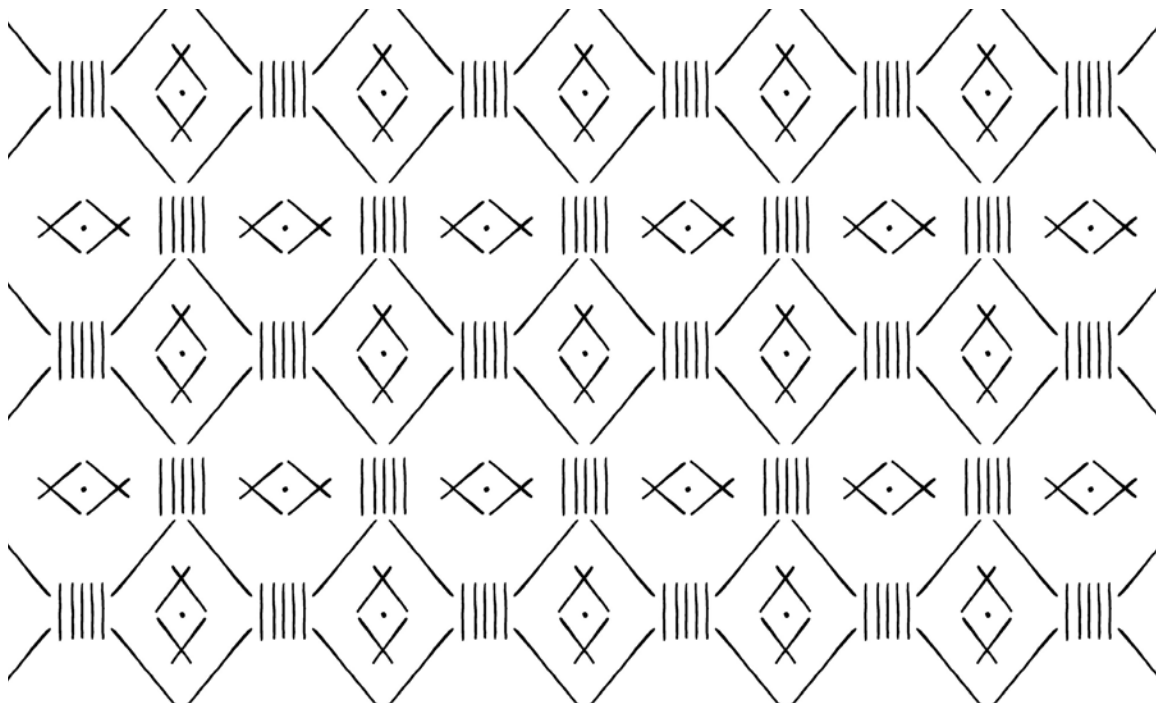
AMERICANA

Our new linen-blend ground cloth is not bleached before printing. As a result, the color of the ground and ink may vary slightly between productions.

- 55% Linen / 45% Cotton
- 54" Width
- 27" Vertical Repeat
- 27" Horizontal Repeat
- Straight
- 50,000 Double Rubs
- Printed up the roll
- Made in Spain

Max

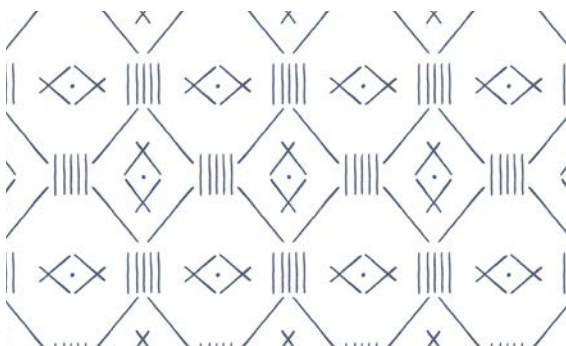
Max was hand drawn with pen and ink and its linework was influenced by a mud cloth textile. The geometric shapes create a clean and meditative layout. It comes in 3 crisp color combinations.



DOMINO



NATURAL



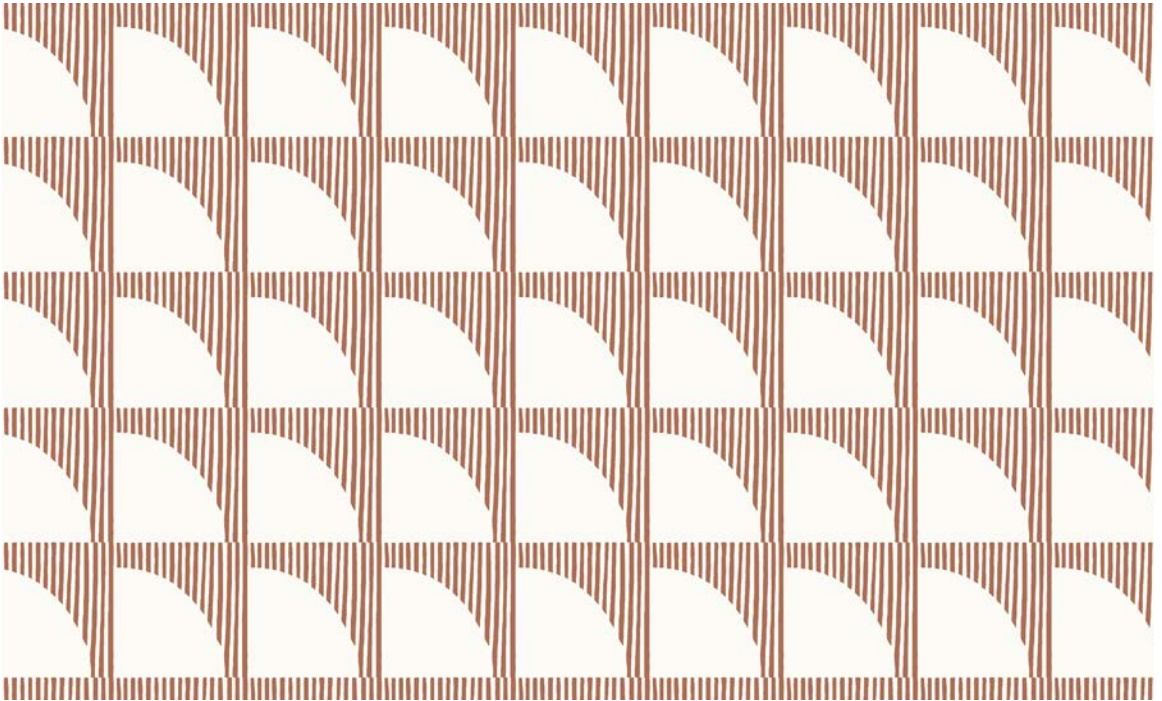
MARINE

- 100% Cotton
- 54" Width
- 3.857" Vertical Repeat
- 3" Horizontal Repeat

- Straight
- 50,000 Double Rubs
- Printed up the roll
- Made in Spain

Nova

Nova is a modern geometric that was composed with a clever use of negative and positive space. Its irregular hand drawn lines construct a backdrop with quarter moon shapes that pop. We are introducing it in 6 contemporary colors.



TERRA



GOLDEN



DOMINO



MARINE



SPA



ECRU

- 100% Cotton
- 54" Width
- 2.25" Vertical Repeat
- 2.25" Horizontal Repeat

- Straight Repeat
- 50,000 Double Rubs
- Printed up the roll
- Made in Spain

Quentin

Quentin was inspired by a vintage wallpaper reference. A retro hybrid of a Jacobean and paisley, the all-over floral is available in 4 traditional and mid-century colorways.



FLANNEL



SPA



DENIM



SPECTRUM

- 100% Cotton
- 54" Width
- 13.5" Vertical Repeat
- 13.5" Horizontal Repeat

- Half Drop
- 30,000 Double Rubs
- Printed up the roll
- Made in Spain

Beth

Hand-painted with watercolor, Beth is a small-scale and stylized leaf pattern inspired by nature. This sweet pattern was created after the artist observed beautiful growing plants. It is offered in 5 colorways and is a perfect companion to so many of our prints.



LEAF



TERRA



SEAFOAM



SAND



DENIM

- 100% Cotton
- 54" Width
- 1.5" Vertical Repeat
- .75" Horizontal Repeat

- Half Drop
- 30,000 Double Rubs
- Printed up the roll
- Made in Spain

Amaya

Lush and tropical, Amaya features a secret jungle oasis with palm trees, birds, foliage, and water. Painted with watercolor, it comes in 3 fashion forward color combinations.



TROPICS



WILLOW



SURF

- 100% Cotton
- 54" Width
- 13.5" Vertical Repeat
- 13.5" Horizontal Repeat

- Half Drop
- 30,000 Double Rubs
- Printed up the roll
- Made in Spain